

CERTIFICATE OF ANALYSIS

Polymer Char

Polymer Characterization, S.A.
Tel.: +34 96 131 8120
info@polymerchar.com
polymerchar.com


Kit Type: GPC/SEC Polystyrene Kit
(ready for calibration, pack of 5x4 vials)

Part No.: PMCP-000182.01

Lot Nr.:

Expiration Date:

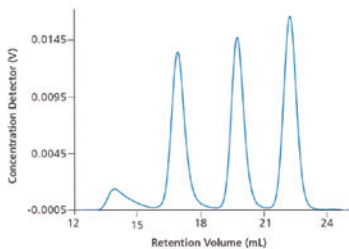
GPC/SEC Conditions:

- Solvent: 1,2,4-tri-chlorobenzene
- Flow rate: 1ml/min
- Temperature: 160°C
- Detector: IR
- Injection volume: 200µl
- Vial description (volume, septum): 10ml, Silicone/PTFE 22mm septum, rounded bottom
- Column/s: 3 x PLgel Olexis (length: 300mm; I. D.: 7.5mm; pore size: 13µm)
- *Recommended dissolution time: 2 minutes* 

Storage:

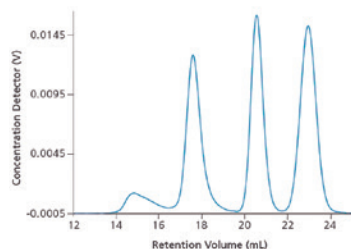
Store the standards in the supplied tight vials in a dry, dark, cool area, e.g. a refrigerator (4°C).

The values in this certificate have been analyzed by using the best practices and with consideration of existing limitations intrinsic of the analytical techniques involved.



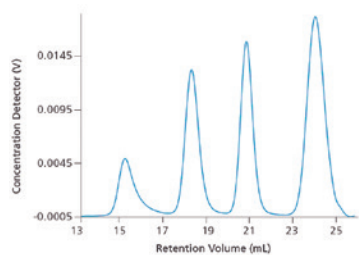
GRAY VIAL

Mp (Da)	Mw (Da)	PDI	c(mg/ml)
12.900.000	10.000.000	1,36	0,25
526.000	524.000	1,04	1,0
34.800	34.000	1,04	1,0
3.220	3.290	1,06	1,0



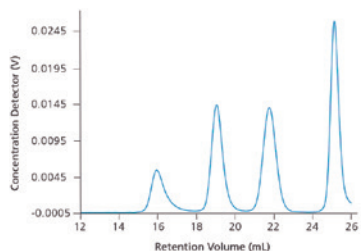
RED VIAL

Mp (Da)	Mw (Da)	PDI	c(mg/ml)
5.150.000	4.840.000	1,15	0,25
238.000	248.000	1,05	0,5
19.700	19.100	1,05	1,0
1.810	1.810	1,05	1,0



GOLDEN VIAL

Mp (Da)	Mw (Da)	PDI	c(mg/ml)
3.510.000	2.840.000	1,10	0,5
127.000	120.000	1,05	1,0
12.600	12.500	1,02	1,0
672	725	1,09	1,0



BLUE VIAL

Mp (Da)	Mw (Da)	PDI	c(mg/ml)
1.500.000	1.500.000	1,05	0,5
61.400	60.900	1,02	1,0
5.180	5.150	1,04	1,0
266	266	1,00	0,5